



Overcoming life's obstacles

Section 11
Transport &
Access Products





Overcoming life's obstacles

Company Profile & Mission Statement

River Abilities is a Western Australian family owned and operated business, established in 1980. The business focuses on assisting people who have decreased mobility due to age, infirmity or disability to:

- Improve their lifestyle
- Increase their independence, and
- Regain their dignity

From our modern showroom, office and warehouse complex in Bentley, we are ideally situated near major distribution routes, airport facilities and central to the Perth Metropolitan area.

Building on the solid foundation provided by the experience of thirty years in the industry, River Abilities has developed sound commercial relationships with domestic and international brand suppliers. We have grown steadily into a highly respected industry leader. We are competitively positioned to offer local and national clientele with products of international standard, innovation and design. Our comprehensive product range satisfies all requirements, including:

- Bathroom and Toilet Equipment
- Shower Commodes
- Bedroom Products
- Home care Products
- Wheelchairs
- Mobility Products
- Patient Handling Products
- Powered Scooters and Power Chairs
- Pressure Care Products
- Seating Products
- Transport & Access Products

Section 11

Transport & Access Products

	Page
Ramps	4
Wheelchair Carriers & Cover	5
Grab Rails	6
Suction Grab Rails	9
Modular Grab Rail System	10
Specialised Rails	14
Handy Bar	14
Custom Made Rails	16
Notes	17





11000 to 11006 Ramps - Single Fold

Features:

- Allows user to negotiate steps easily and safely
- Ideal for users requiring the assistance of an attendant
- Folds for easy storage and transportation
- Carry Handle to assist transportation
- Aluminium construction



Specifications	11000	11001	11002	11003	11004	11005	11006
Overall Length	600mm	900mm	1200mm	1500mm	1800mm	2000mm	2100mm
Overall Width	740mm	740mm	740mm	740mm	740mm	740mm	740mm
Folded Width	370mm	370mm	370mm	370mm	370mm	370mm	370mm
Unit Weight	5kg	7kg	10kg	12.5kg	15.5kg	16kg	17kg
Safe Working Load	200kg	200kg	200kg	200kg	200kg	200kg	200kg

11100 & 11101 Ramps - Threshold

Features:

- Allows user to negotiate threshold or small steps easily and safely
- Slip resistant recycled rubber
- Quick and easy installation, may be laid in place or fixed permanently with builders adhesive
- Meets access and mobility gradient 1:8
- Portable



Specifications	11100	11101
Overall Height	25mm	50mm
Overall Width	1010mm	1140mm
Overall Depth	200mm	400mm
Unit Weight	4kg	13kg



Birt Manual Wheelchair Carrier - Self Propelled

11120

Features:

- Wheelchair holder secures to vehicle towbar for transportation
- Easy tilt mechanism for loading wheelchair
- Fastening straps secure wheelchair to anchor points on carrier
- Easily removed
- Durable zinc treated steel construction
- To suit self propelled wheelchairs

Specifications

Overall Width	600mm
Overall Depth	540mm
Overall Height	550mm
Unit Weight	8.7kg
Safe Working Load	45kg

NOTE: Installation by qualified installer recommended



Birt Manual Wheelchair Carrier - Transit Propelled

11121

Features:

- Wheelchair holder secures to vehicle towbar for transportation
- Easy tilt mechanism for loading wheelchair
- Fastening straps secure wheelchair to anchor points on carrier
- Easily removed
- Durable zinc treated steel construction
- To suit transit propelled wheelchairs

Specifications

Overall Width	740mm
Overall Depth	440mm
Overall Height	555mm
Unit Weight	10.4kg
Safe Working Load	45kg

NOTE: Installation by qualified installer recommended



Weatherproof Cover

5700

Features:

- Suits most standard wheelchairs
- Waterproof nylon
- Drawstring closure





11250 to 11254

Stainless Steel 25mm Grab Rail - Single Hole



Features:

- Provides additional support for transfers
- Suitable for wet and dry applications
- 25mm diameter tubing
- Stainless steel construction

Specifications	11250	11251	11252	11253	11254
Overall Length	300mm	450mm	600mm	750mm	900mm
Unit Weight	200g	300g	300g	400g	600g

NOTE: Installation by qualified installer recommended

11255 to 11259

Stainless Steel 25mm Grab Rail - Single Hole White



Features:

- Provides additional support for transfers
- Suitable for wet and dry applications
- 25mm diameter tubing
- Stainless steel construction

Specifications	11255	11256	11257	11258	11259
Overall Length	300mm	450mm	600mm	750mm	900mm
Unit Weight	200g	300g	300g	400g	600g

NOTE: Installation by qualified installer recommended

11260 to 11262

Aluminium 25mm Grab Rail - Multi Hole White



Features:

- Provides additional support for transfers
- Suitable for wet and dry applications
- 25mm diameter tubing
- Multiple fixing points
- Concealed flanges cover fixing points
- Aluminium construction

Specifications	11260	11261	11262
Overall Length	300mm	450mm	600mm
Unit Weight	250g	300g	600g

NOTE: Installation by qualified installer recommended



Aluminium 25mm Grab Rail - Multi Hole Ivory

11270 to 11272

Features:

- Provides additional support for transfers
- Suitable for wet and dry applications
- 25mm diameter tubing
- Multiple fixing points
- Concealed flanges cover fixing points
- Aluminium construction



Specifications	11270	11271	11272
Overall Length	300mm	450mm	600mm
Unit Weight	250g	300g	600g

NOTE: Installation by qualified installer recommended

Stainless Steel 25mm Grab Rail - Single Hole Concealed Fixing

11280 to 11284

Features:

- Provides additional support for transfers
- Suitable for wet and dry applications
- 25mm diameter tubing
- Multiple fixing points
- Concealed flanges cover fixing points
- Aluminium construction



Specifications	11280	11281	11282	11283	11284
Overall Length	300mm	450mm	600mm	750mm	900mm
Unit Weight	300g	400g	550g	550g	700g

NOTE: Installation by qualified installer recommended

Stainless Steel 25mm Grab Rail - Multi Hole

11290 to 11295

Features:

- Provides additional support for transfers
- Suitable for wet and dry applications
- 25mm diameter tubing
- Multiple fixing points
- Stainless steel construction



Specifications	11290	11291	11292	11293	11294	11295
Overall Length	300mm	450mm	600mm	750mm	900mm	1200mm
Unit Weight	350g	500g	600g	700g	800g	1kg

NOTE: Installation by qualified installer recommended



11300 to 11304

Stainless Steel 25mm Grab Rail -
Multi Hole Concealed Fixing

Features:

- Provides additional support for transfers
- Suitable for wet and dry applications
- 25mm diameter tubing
- Multiple fixing points
- Concealed flanges cover fixing points
- Stainless steel construction

Specifications	11300	11301	11302	11303	11304
Overall Length	300mm	450mm	600mm	750mm	900mm
Unit Weight	450g	550g	550g	700g	700g

NOTE: Installation by qualified installer recommended

11310 to 11315

Stainless Steel 32mm Grab Rail -
Multi Hole

Features:

- Provides additional support for transfers
- Suitable for wet and dry applications
- 32mm diameter tubing
- Multiple fixing points
- Stainless steel construction

Specifications	11310	11311	11312	11313	11314	11315
Overall Length	300mm	450mm	600mm	750mm	900mm	1200mm
Unit Weight	500g	700g	750g	850g	950g	1.2kg

NOTE: Installation by qualified installer recommended

11320 to 11325

Stainless Steel 32mm Grab Rail -
Multi Hole Concealed Fixing

Features:

- Provides additional support for transfers
- Suitable for wet and dry applications
- 32mm diameter tubing
- Multiple fixing points
- Concealed flanges cover fixing points
- Stainless steel construction

Specifications	11320	11321	11322	11323	11324	11325
Overall Length	300mm	450mm	600mm	750mm	900mm	1200mm
Unit Weight	600g	750g	1kg	1.1kg	1.2kg	1.75kg

NOTE: Installation by qualified installer recommended



Suction Rail 11400

Features:

- Provides additional support for transfers
- Suitable for wet and dry applications
- Quick and easy installation
- Portable

Specifications

Overall Length	400mm
Unit Weight	600g

NOTE: Must be installed onto smooth tiled or glass surface



Suction Rail 11401

Features:

- Provides additional support for transfers
- Suitable for wet and dry applications
- Quick and easy installation
- Portable

Specifications

Overall Length	500mm
Unit Weight	550g

NOTE: Must be installed onto smooth tiled or glass surface



Suction Rail 11402

Features:

- Provides additional support for transfers
- Suitable for wet and dry applications
- Quick and easy installation
- Portable

Specifications

Overall Length	600mm
Unit Weight	700g

NOTE: Must be installed onto smooth tiled or glass surface



Suction Rail (2 Rails) 11403

Features:

- Provides additional support for transfers
- Suitable for wet and dry applications
- Quick and easy installation
- Portable

Specifications

Overall Length	605mm / bend / 605mm
Unit Weight	1.1kg

NOTE: Must be installed onto smooth tiled or glass surface





11500 Tube Connector Rings



NOTE: Installation by qualified installer recommended

Features:

- Modular system allows for any configuration and multiple combinations to suit wide variety of applications
- Provides additional support for transfers
- Suitable for wet and dry applications
- 32mm diameter tubing
- Multiple fixing points
- Stainless steel construction

11501 Return to Wall



NOTE: Installation by qualified installer recommended

Features:

- Modular system allows for any configuration and multiple combinations to suit wide variety of applications
- Provides additional support for transfers
- Suitable for wet and dry applications
- 32mm diameter tubing
- Multiple fixing points
- Stainless steel construction

11510 Intermediate Support - T Junction



NOTE: Installation by qualified installer recommended

Features:

- Modular system allows for any configuration and multiple combinations to suit wide variety of applications
- Provides additional support for transfers
- Suitable for wet and dry applications
- 32mm diameter tubing
- Multiple fixing points
- Stainless steel construction

11511 Intermediate Support - Straight



NOTE: Installation by qualified installer recommended

Features:

- Modular system allows for any configuration and multiple combinations to suit wide variety of applications
- Provides additional support for transfers
- Suitable for wet and dry applications
- 32mm diameter tubing
- Multiple fixing points
- Stainless steel construction

11520 Intermediate Support - 90° with Wall Flange Left Hand



NOTE: Installation by qualified installer recommended

Features:

- Modular system allows for any configuration and multiple combinations to suit wide variety of applications
- Provides additional support for transfers
- Suitable for wet and dry applications
- 32mm diameter tubing
- Multiple fixing points
- Stainless steel construction



Intermediate Support - 90° with Wall Flange Right Hand

11521

Features:

- Modular system allows for any configuration and multiple combinations to suit wide variety of applications
- Provides additional support for transfers
- Suitable for wet and dry applications
- 32mm diameter tubing
- Multiple fixing points
- Stainless steel construction



NOTE: Installation by qualified installer recommended

Intermediate Support - 90° without Wall Flange

11522

Features:

- Modular system allows for any configuration and multiple combinations to suit wide variety of applications
- Provides additional support for transfers
- Suitable for wet and dry applications
- 32mm diameter tubing
- Multiple fixing points
- Stainless steel construction



NOTE: Installation by qualified installer recommended

Intermediate Support - 135° with Wall Flange Left Hand

11530

Features:

- Modular system allows for any configuration and multiple combinations to suit wide variety of applications
- Provides additional support for transfers
- Suitable for wet and dry applications
- 32mm diameter tubing
- Multiple fixing points
- Stainless steel construction



NOTE: Installation by qualified installer recommended

Intermediate Support - 135° with Wall Flange Right Hand

11531

Features:

- Modular system allows for any configuration and multiple combinations to suit wide variety of applications
- Provides additional support for transfers
- Suitable for wet and dry applications
- 32mm diameter tubing
- Multiple fixing points
- Stainless steel construction



NOTE: Installation by qualified installer recommended

Intermediate Support - 135° without Wall Flange

11532

Features:

- Modular system allows for any configuration and multiple combinations to suit wide variety of applications
- Provides additional support for transfers
- Suitable for wet and dry applications
- 32mm diameter tubing
- Multiple fixing points
- Stainless steel construction



NOTE: Installation by qualified installer recommended



11540

Internal Corner Support - 90° with Wall Flange Left Hand



Features:

- Modular system allows for any configuration and multiple combinations to suit wide variety of applications
- Provides additional support for transfers
- Suitable for wet and dry applications
- 32mm diameter tubing
- Multiple fixing points
- Stainless steel construction

NOTE: Installation by qualified installer recommended

11541

Internal Corner Support - 90° with Wall Flange Right Hand



Features:

- Modular system allows for any configuration and multiple combinations to suit wide variety of applications
- Provides additional support for transfers
- Suitable for wet and dry applications
- 32mm diameter tubing
- Multiple fixing points
- Stainless steel construction

NOTE: Installation by qualified installer recommended

11542

Internal Corner Support - 90° with Corner Bracket



Features:

- Modular system allows for any configuration and multiple combinations to suit wide variety of applications
- Provides additional support for transfers
- Suitable for wet and dry applications
- 32mm diameter tubing
- Multiple fixing points
- Stainless steel construction

NOTE: Installation by qualified installer recommended

11502

Universal Tube & Flange



Features:

- Modular system allows for any configuration and multiple combinations to suit wide variety of applications
- Provides additional support for transfers
- Suitable for wet and dry applications
- 32mm diameter tubing
- Multiple fixing points
- Stainless steel construction

NOTE: Installation by qualified installer recommended





Straight Tube - 32mm Satin Polished

11550 & 11551

Features:

- Modular system allows for any configuration and multiple combinations to suit wide variety of applications
- Provides additional support for transfers
- Suitable for wet and dry applications
- Stainless steel construction



Specifications

11550

11551

Overall Length

1000mm

2000mm

NOTE: Installation by qualified installer recommended

Straight Tube - 32mm Firm Grip

11553 & 11554

Features:

- Modular system allows for any configuration and multiple combinations to suit wide variety of applications
- Provides additional support for transfers
- Suitable for wet and dry applications
- Stainless steel construction



Specifications

11553

11554

Overall Length

1000mm

2000mm

NOTE: Installation by qualified installer recommended

Straight Tube - 32mm Diamond Grip

11557 & 11558

Features:

- Modular system allows for any configuration and multiple combinations to suit wide variety of applications
- Provides additional support for transfers
- Suitable for wet and dry applications
- Stainless steel construction



Specifications

11557

11558

Overall Length

1000mm

2000mm

NOTE: Installation by qualified installer recommended

Adhesive

11560

Features:

- Permanent adhesive to secure Modular Grab Rail System



Specifications

Unit

3ml

NOTE: Installation by qualified installer recommended

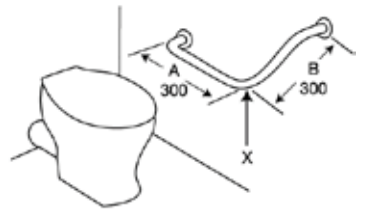


11600 Stainless Steel Angled 32mm Grabrail - Multi Hole



Features:

- Provides additional support for transfers
- Suitable for wet and dry applications
- 32mm diameter tubing
- Multiple fixing points
- Concealed flanges cover fixing points
- Stainless steel construction



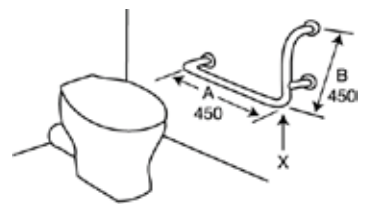
NOTE: Installation by qualified installer recommended

11603 & 11604 Stainless Steel Angled 32mm Grabrail - Multi Hole



Features:

- Provides additional support for transfers
- Suitable for wet and dry applications
- Multiple fixing points
- Concealed flanges cover fixing points
- Stainless steel construction
- Complies with AS1428



NOTE: Installation by qualified installer recommended

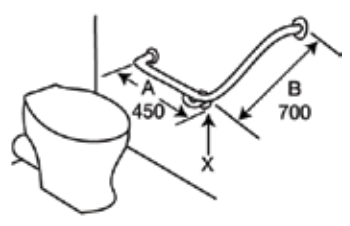
Specifications	11603	11604
Fixing	Left Hand	Right Hand

11607 & 11608 Stainless Steel Angled 32mm Grabrail - Multi Hole



Features:

- Provides additional support for transfers
- Suitable for wet and dry applications
- Multiple fixing points
- Concealed flanges cover fixing points
- Stainless steel construction



NOTE: Installation by qualified installer recommended

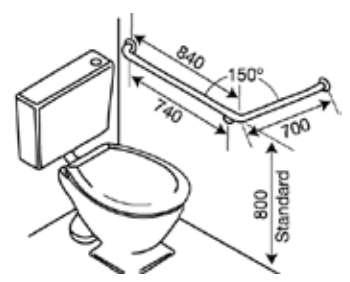
Specifications	11607	11608
Fixing	Left Hand	Right Hand

11610 & 11611 Stainless Steel Angled 32mm Grabrail - Multi Hole



Features:

- Provides additional support for transfers
- Suitable for wet and dry applications
- Multiple fixing points
- Concealed flanges cover fixing points
- Stainless steel construction



NOTE: Installation by qualified installer recommended

Specifications	11610	11611
Fixing	Left Hand	Right Hand

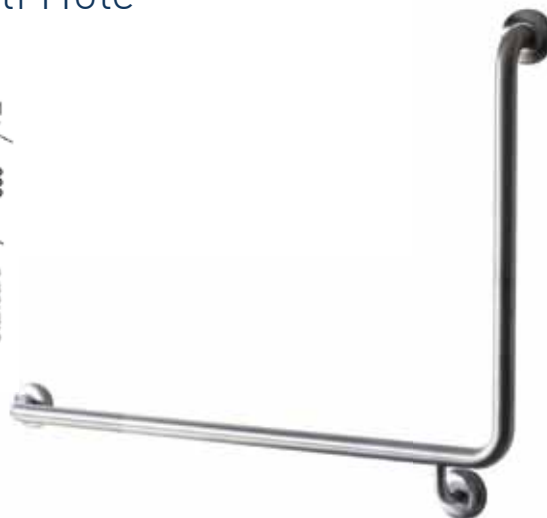
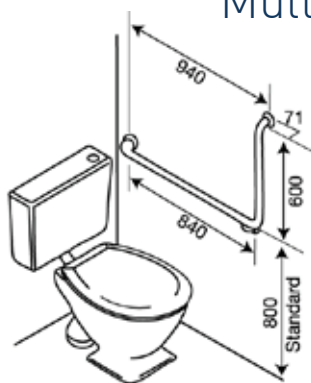


Stainless Steel Angled 32mm Grabrail - Multi Hole

11614 & 11615

Features:

- Provides additional support for transfers
- Suitable for wet and dry applications
- 32mm diameter tubing
- Multiple fixing points
- Concealed flanges cover fixing points
- Stainless steel construction



Specifications

11614

11615

Fixing

Left Hand

Right Hand

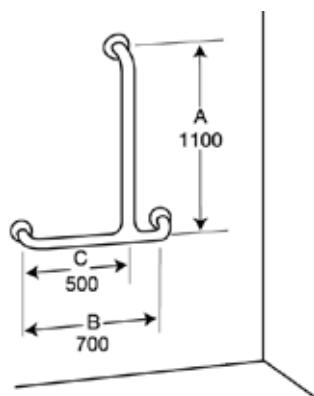
NOTE: Installation by qualified installer recommended

Stainless Steel T Junction 32mm Grabrail - Multi Hole

11620 & 11621

Features:

- Provides additional support for transfers
- Suitable for wet and dry applications
- 32mm diameter tubing
- Multiple fixing points
- Concealed flanges cover fixing points
- Stainless steel construction
- Complies with AS1428



Specifications

11620

11621

Fixing

Left Hand

Right Hand

NOTE: Installation by qualified installer recommended

Handy Bar

11950

Features:

- Provides a safe and supportive handhold for transfers in and out of the car
- Locates onto U shaped striker plate on vehicle door frame
- Contoured non slip handle provides secure grip
- Convenient size
- Easy to install and remove
- Inbuilt seat belt cutter and glass breaker
- Strong alloy sub frame

Specifications

Overall Length	240mm
Unit Weight	300g



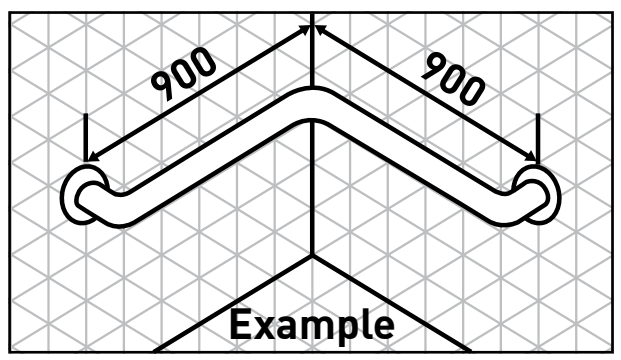


Custom Custom Made Rails

Any shape, size or configuration can be manufactured to suit your requirements.

Photocopy this page, draw your design including all measurements and angle degrees.

Fax back to River Abilities on **08 9350 5299** for a quotation.



A large rectangular area filled with a fine grid pattern, intended for the user to draw their custom rail design. The grid is composed of small squares.

NOTE: Installation by qualified installer recommended

Company:..... Contact Name:

Address:..... Phone Number:.....

..... Fax Number:.....

..... Email:



Overcoming life's obstacles

 **Freecall: 1800 656 654**

29 Alexandra Place, Bentley, WA 6102

PO Box 29, Bentley, WA 6982

 (08) 9350 6600

 (08) 9350 5299

 sales@riverabilities.com.au

 www.riverabilities.com.au

